

**SBE ANNUAL CONFERENCE**  
LONDON 2017



**Challenge and Change**  
**The UK, Euro Area**  
**and Global Economic**  
**Outlook.**

# THE SOCIETY OF BUSINESS ECONOMISTS

WELCOME YOU TO THEIR ANNUAL CONFERENCE 2017

---



SBE Annual Conference

15th September 2017  
9am-2pm

15 Hatfields  
London  
SE1 8DJ

[www.sbe.co.uk](http://www.sbe.co.uk)

**To discuss the UK, Euro area and global outlook and the risks around that outlook, we have an exceptional line-up of speakers at this year's SBE Annual Conference.**

Pablo Hernández de Cos, Director General for Economics, Statistics and Research, Banco de España, discussing Euro area monetary policy issues.

Dr Gertjan Vlieghe, Member of the Bank of England's Monetary Policy Committee will talk about the outlook for the UK economy and monetary policy.

Stephen King, Senior Economic Adviser, HSBC, will discuss the prospects for globalization and the global economy.

Chris Giles, Economics Editor, Financial Times, considering economics, policy and the markets.

Dr Diane Coyle OBE, Director, Enlightenment Economics, will talk about the challenge of measuring output in the modern economy.

Chaired by BBC presenter Evan Davis, this event brings together members and key economists from public and private financial institutions and academe in the UK and abroad, for lively and highly engaging discussions on some of the critical issues facing business and world economies today.

## PROGRAMME

- 08.30 Registration
- 09.00 Chairman's Introduction  
Evan Davis, BBC

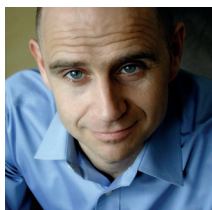
### Session 1

- 09.10 Euro area monetary policy: Issues and outlook  
Pablo Hernández de Cos, Director General ESR, Banco de España
- 09.40 Q&A session
- 09.50 UK monetary policy: Issues and outlook  
Dr Gertjan Vlieghe, member, Bank of England's Monetary Policy Committee
- 10.20 Q&A session
- 10.30 Coffee

### Session 2

- 11.00 Grave New World: The end of globalization and return of history  
Stephen King, Senior Economic Adviser, HSBC
- 11.30 Q&A session
- 11.40 Economics, politics and markets  
Chris Giles, Economics Editor, Financial Times
- 12.10 Q&A session
- 12.20 Measuring the modern economy  
Dr Diane Coyle OBE, Director, Enlightenment Economics
- 12.50 Q&A session
- 13.00 Lunch

## MEET YOUR EXPERT SPEAKER PANEL



**Evan Davis** is a presenter of the BBC 2 current affairs programme Newsnight, a role he began in September 2014. From April 2008 up to then, he was a presenter of the Today programme on BBC Radio 4. He is also well known as the presenter of the BBC 2 business reality show Dragons' Den and on Radio 4 he hosts a weekly business programme, The Bottom Line. Before joining the BBC in 1993, Evan was an economist at the Institute for Fiscal Studies, and at the London Business School.



**Pablo Hernández de Cos** is currently Director General for Economics, Statistics and Research, a member of the Executive Commission of the Banco de España and Alternate to the Governor on the Governing Council of the European Central Bank. He is also a member of the Consejo Superior de Estadística (Spanish Higher Statistics Board) and of the Board of Trustees of CEMFI and FEDEA, sitting in this latter case on this Foundation's Executive Board. Since 2016, he is a member of the Board of the International Center for Monetary and Banking Studies (ICMB)



**Dr Gertjan Vlieghe** joined the Monetary Policy Committee of the Bank of England on 1 September 2015. Prior to his appointment he had been a partner and senior economist at Brevan Howard Asset Management, researching global macroeconomic trends and their interaction with asset prices. From 2005 to 2007 he was a bond strategist at Deutsche Bank. From 1998 to 2005 he held a number of posts at the Bank of England, including the post of Economic Assistant to Governor Mervyn King.



**Chris Giles** is a columnist at the Financial Times and has been its Economics Editor since 2004. Based in London he has a particular focus on trends in the world economy and in the UK. Previously at the Financial Times, he was the economics editorial writer.

He won the prestigious Wincott Award for journalism in 2014 and the British Journalism Award's business journalist of the year prize in the 2012. He has also won the Royal Statistical Society prize for excellence in journalism in both 2008 and 2012.

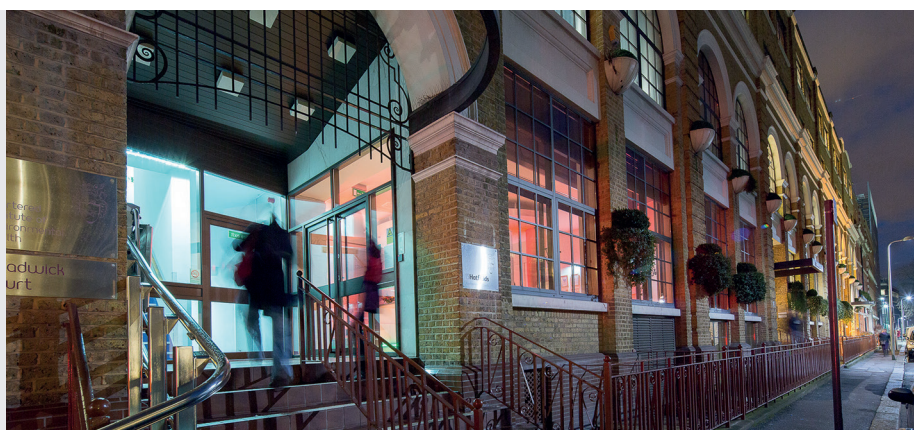


**Stephen King** is HSBC's Senior Economic Adviser and a successful author. In 2014, Stephen became a member of the Financial Times "Exchange" which, in the FT's words, offers "agenda-setting commentary from leading policymakers, academics and writers around the world". Stephen's career began at HM Treasury, where he was an economic adviser within the UK civil service. In his new book, *Grave New World: The End of Globalization, the Return of History* (Yale), Stephen argues that globalization, often thought to be the best route towards economic prosperity, is by no means inevitable.



**Dr Diane Coyle OBE** is a Professor of Economics at the University of Manchester and Co-Director of Policy@Manchester. She founded the consultancy Enlightenment Economics. Diane is a Fellow of the Office for National Statistics and researcher in the Economic Statistics Centre of Excellence. Her books include the bestselling *GDP: A Brief but Affectionate History*, *The Economics of Enough: How to run the economy as if the future matters*, and *The Soulful Science* (all Princeton University Press).

15Hatfields  
Conferences and Events





# Booking Form

To book a place at the SBE Annual Conference 2017 please complete the sections below in capitals and return to:  
SBE: Dean House, Vernham Dean, Andover, Hampshire SP11 0JZ. Tel: 01264 737552. Fax: 01264 737552.  
Alternatively, book online via [www.sbe.co.uk](http://www.sbe.co.uk)

## Personal Details

Title:	Forename(s):
Surname:	
Address:	
	Postcode:
Organisation:	
Email address:	
Work telephone:	Mobile:

We will send your booking confirmation by email unless you tick the box to receive them by post:

## Special Dietary Requirements

You

Vegetarian     Gluten Free     Dairy Free     Other \_\_\_\_\_

You

Vegetarian     Gluten Free     Dairy Free     Other \_\_\_\_\_

## Tickets

**Members:** I require  places

Price: £150+vat (£180)

**Non Members:** I require  places

Price: £300+vat (£360)

Total Payment
£

## Payment Details

- I enclose a **cheque** payable to 'The Society of Business Economists' for the appropriate amount
- I authorise you to debit my **Credit Debit Card** with all amounts due
- I am paying by **Bank Transfer**

Please quote your name or membership number with all payments:

Name / Membership Number:

**If paying by bank transfer**, please send your transfer to:

Natwest  
Watford Junction Branch  
7 Station Road WD1 1TH

Account Name: Society of Business Economists  
Account Number: 49081438  
Sort Code: 60-22-40

**Please debit my:**

- Amex
- Visa
- MasterCard
- Maestro (Switch)

Name on Card:	
Card Number (16 digits):	Security Code (3 digits):
Valid From:   M   M   Y   Y      Issue Number:	Card Holder's Signature
Expiry Date:   M   M   Y   Y	